

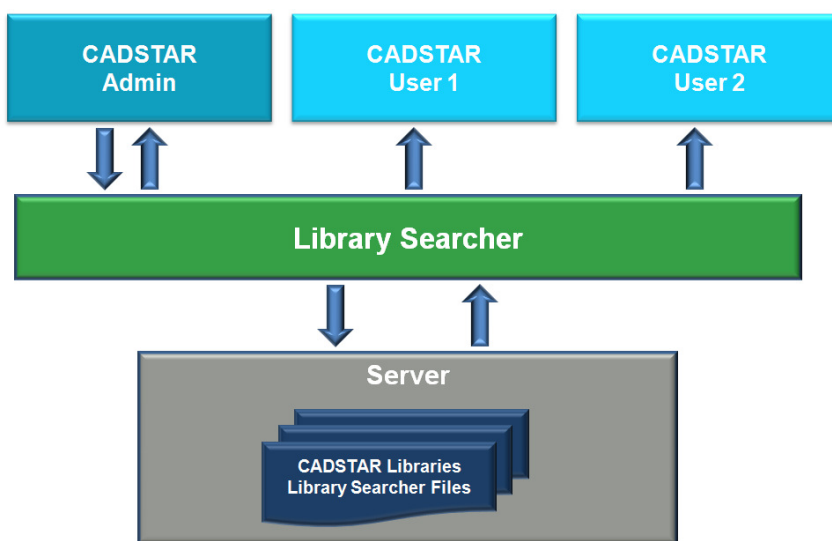


# Library Searcher

CSK

## The efficient search engine for CADSTAR

The **Library Searcher** is an easy-to-use **search engine for CADSTAR** that takes over the sometimes difficult and time-consuming task of searching for and finding the best available components and performs this task a targeted manner.



Consequently, the Library Searcher offers users a **fast and simple means** of **finding components** from all CADSTAR libraries. This ensures that, on the basis of user-defined selection criteria (e.g. a specific casing shape, a precise resistance value and much more), the best possible part is used. With each criterion, the Library Searcher filters the remaining components further and shows only these in the display window.

The Library Searcher can display its **full potential in a multi-user environment**. For this to happen, all CADSTAR libraries must be managed centrally within the network on a single server. Access to these libraries is quick and efficient thanks to the Library Searcher. This means that, for the employee in charge of such matters, the amount of work involved with searching and finding components is reduced to just a few clicks of the mouse. All that's needed is for a user to index all the components just once. All further users can then use the libraries without restrictions and without further effort. For instance, 100 diodes can be located in just 0.4 seconds from a total of 20,000 components, which corresponds to a **time saving of around 99%**.

### Highlights of the Library Searcher

The Library Searcher increases **efficiency** during **design development** with CADSTAR:

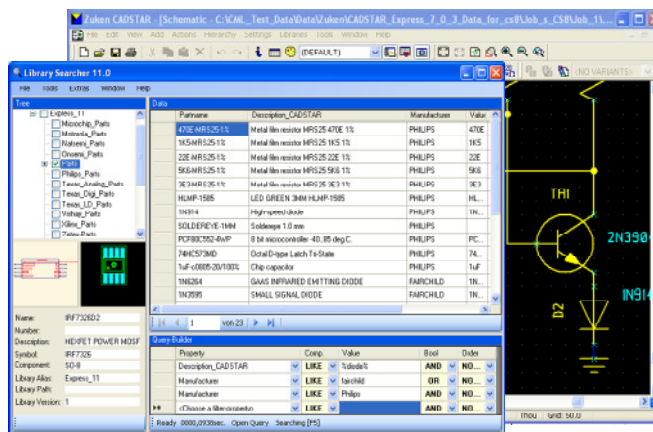
- The successful response to any search query in less than a second results in a time saving of around 99%.
- The search for components across all stored attributes increases productivity thanks to the targeted selection of components.
- Direct integration via drag & drop into CADSTAR facilitates rapid changes to the design.
- The customisation of search queries and the results returned give the user a tremendous degree of flexibility
- The SQL query structure enables comparisons or templates to be integrated for the search queries, such as "like", ">", in order to make search queries even more targeted
- The programming, based on SQL databases or alternatively on XML files, ensures superlative flexibility and compatibility.

**Speed is one of our Library Searcher's best qualities.**

## Technical specifications for Library Searcher

The Library Searcher supports you as a designer with the following functions:

- Linking of filter and query functions using logical operators "AND" or "OR"
- Definition of views of technical features in table overviews
- Automatic display of the schematic and layout symbol for a highlighted component
- Direct display of key component data such as the item number, symbol, source and description
- Storage of frequently-used queries as favourites
- Customisation of the view of query responses with the "Column Chooser" - freely-selectable column names, numbers and sequences
- Support for searches in global, local or project libraries
- Integration of further information using hyperlinks; displayed and executable, such as the opening of a datasheet or a specific manufacturer's website



In view of the **direct integration** into **CADSTAR**, the located components can be used directly in all CADSTAR functions.

By simply **selecting** in the **search window**, the designer is able to move the component directly into the schematic or layout. The **familiar CADSTAR functions** such as Add, Edit and Replace Part are available with the right-hand mouse button. The same of course also applies for the editing of symbols or components; both can be executed directly from the search window with a click of the mouse.

The Library Searcher also supports **CADSTAR multiple library functionality** in full. This means that, as a designer, you no longer need to know what library contains certain components - this task is performed for you by the Library Searcher. Of course, any search query can also be limited to the main, project or any other component library.

The Library Searcher is available in two versions:

### SQL database-based Library Searcher:

- Additional export functions into CSV or RTF format for all search results
- Central administration of stored queries
- At least Microsoft SQL Server 2005 Express Edition (free)

### XML file server-based Library Searcher:

- No database needed
- Very simple setup
- Can be used with CADSTAR immediately

### Technical requirements

- Operating system: Windows Vista, Windows XP SP2, Windows Server 2003 R2 /2008, both as 32 or 64 Bit including Net Framework 3.0
- Computer with 1.6 GHz processor
- 1 GB of RAM
- 1 GB of hard disk space
- Screen resolution of 1024x768 or higher